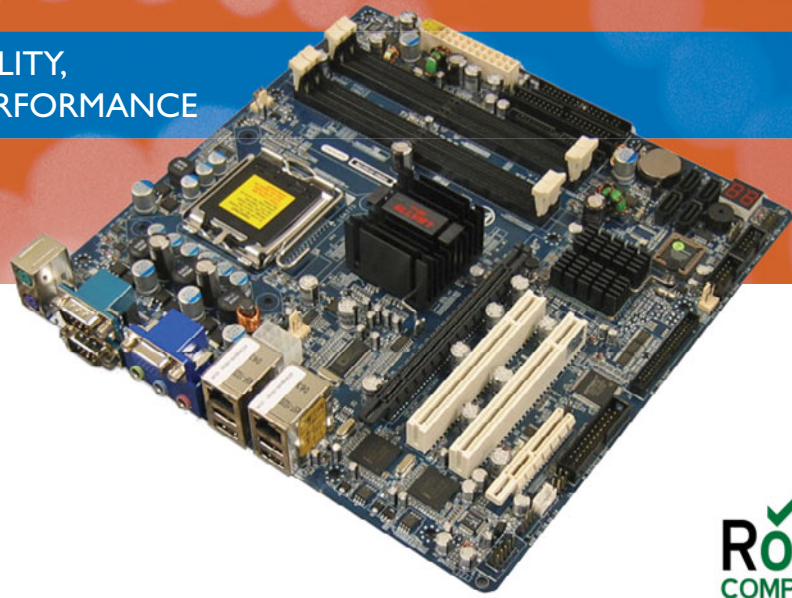


Phoenix™ MicroATX Express

LONG-LIFE MOTHERBOARD FEATURING PCI EXPRESS

DELIVERING BEST-IN-CLASS SCALABILITY,
OFFERING LONG LIFE AND HIGH PERFORMANCE



PRODUCT HIGHLIGHTS

- Intel® Pentium® 4 and Celeron® D embedded processors
- Intel Pentium D commercial processors
- Intel 945G Express chipset
- Dual PCIE Gigabit Ethernet
- Up to 4GB of Dual Channel DDR2
- Quad Serial ATA II (300MB/s) RAID 0/I
- Seven (7) to Ten (10) Year Guaranteed Production

The Phoenix™ MicroATX Express

is a long-life industrial motherboard with dual-core processor technology and PCI Express. Powered by the Intel® Pentium® 4 and Celeron® D processors and the Intel 945G Express chipset, the Phoenix MicroATX Express was designed specifically for performance intensive industrial applications such as Medical, Security, Imaging, Industrial Automation, and Manufacturing.

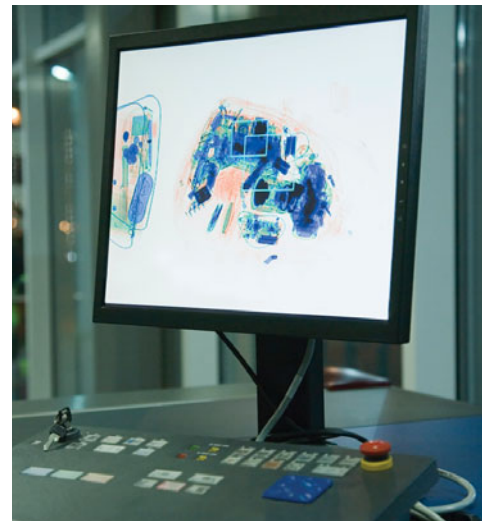
APPLICATIONS

- Medical
- Security
- Imaging
- Industrial Automation
- Manufacturing

The featured PCI Express x16 dedicated graphics slot supports the latest high-performance graphics cards, delivering over 3.5 times traditional AGP 8X. This feature is ideal for graphic intensive embedded computing applications. The featured PCI Express x4 is capable of transferring 2 GB/s, up to 3.5 times faster than standard PCI architecture.

The Phoenix MicroATX Express supports four (4) Serial ATA connectors (300MB/s) for high-speed hard disk drives, eight (8) USB 2.0 ports, two (2) PCI Express-based 10/100/1000 ethernet ports, Intel High Definition Audio/ AC'97 Audio, and onboard Intel Graphics Media Accelerator (GMA).

Standard features include two (2) 32-bit (version 2.3) PCI slots for legacy devices, two (2) PATA/100 EIDE connectors, four (4) RS232 serial ports (factory configurable to RS422), one (1) parallel port, one (1) PS/2 mouse/keyboard connector and a floppy controller.



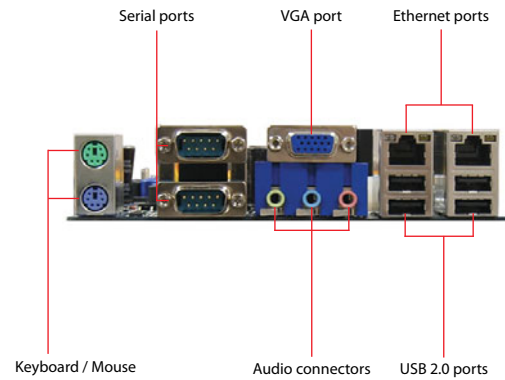
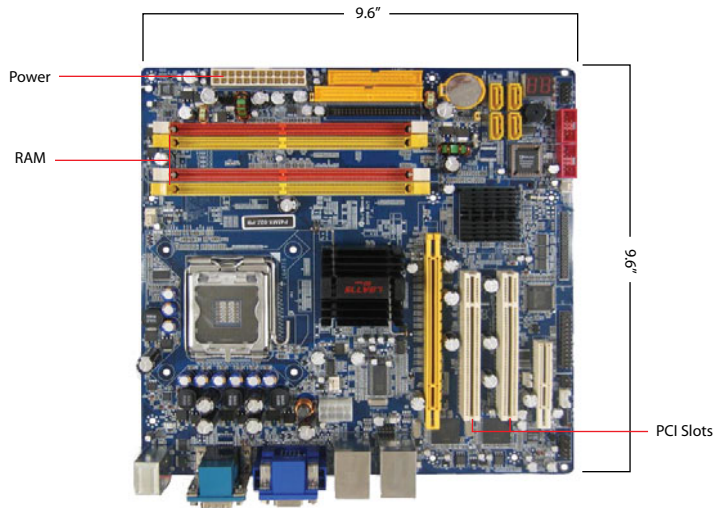
OUR COMMITMENT TO QUALITY

All Corvalent products are designed and manufactured in an ISO 9001:2008 environment and backed by a seven (7) to ten (10) year production life cycle guarantee.



Phoenix™ MicroATX Express

LONG-LIFE MICROATX MOTHERBOARD FEATURING PCI EXPRESS



TECHNICAL SPECIFICATIONS

Form Factor MicroATX

Dimensions 9.6" x 9.6"

Microprocessor Embedded: Intel® Celeron® D, Intel Pentium® 4 with Hyper-Threading Technology and Intel Pentium 4 processor (LGA775)
Commercial: Intel Pentium D processor

Chipset Intel 945G Express + ICH7R

Front Side Bus 533/800/1000MHz

Memory Four (4) DIMM sockets support up to 4GB of dual channel DDR2 667/533 MHz memory

System Bus One (1) PCI Express x16
One (1) PCI Express x4 slot
Two (2) 32-bit PCI slots (version 2.3)

Onboard I/O Four (4) SATA2 connectors (300MB/s) for high-speed storage devices
Intel Matrix Storage Technology supports RAID 0/1/5/10.
One (1) 40-pin PATA/100 EIDE connector
One (1) 44-pin PATA/100 EIDE connector (shared with 40-pin connector)
Eight (8) USB 2.0 ports, four (4) connectors, four (4) USB headers
Four (4) RS232 serial ports standard (DB9 interface) One (1) factory configurable to RS422
Infrared support on COM2 through header
One (1) PS/2 mouse/keyboard connector
One (1) floppy connector (supports two drives)
ATX12V power supply

Video Graphics One (1) PCI Express x16 dedicated graphics slot for high-performance graphics cards. Single DB15 connector interface for onboard

integrated graphics utilizing Intel Graphics Media Accelerator 950
(Max resolution 2048 x 1536 @ 75Hz)

Ethernet Two (2) onboard PCI Express-based 10/100/1000 Ethernet ports.
Both ports support Wake-on-LAN

Audio Intel High Definition Audio/AC'97

Industrial Devices Hardware monitoring including fans
CPU temperature and voltages
POST display for diagnostics

BIOS AMI®

Battery Removable lithium battery for CMOS memory

Operating Temp 0°C to 55°C

Non-Operating -40°C to 85°C

Op. Humidity 5 to 95% @ 40°C non-condensing

Non-Operating 5 to 95% @ 40°C non-condensing

Part Number P45MX

CORVALENT™
AT THE CORE OF EMBEDDED COMPUTING

1101 Arrow Point Drive, Building 5
Cedar Park, TX 78613, USA
toll free 888.776.7896 phone 512.456.2400
fax 512.456.2404 info@corvalent.com

www.corvalent.com