

CorBrick855X™

LOW-PROFILE, INTEGRATED EMBEDDED SYSTEM

CORBRICK FAMILY

COMPACT, RUGGED, WALL-MOUNTABLE,
HIGH PERFORMANCE-PER-WATT PACKAGE



PRODUCT HIGHLIGHTS

- Mini-ITX Form Factor (6.7" x 6.7")
- Compact profile 10" x 11" x 2" (273mm x 300mm x 65mm)
- 600MHz, 1.3GHz, 1.6GHz, 1.8GHz Pentium® M and Celeron®
- 2GB DDR-333
- Low Profile IDE CD/DVD Drive
- 1 Slim ODD Drive Bay
- High resolution graphics, 10 / 100 / 1000 Ethernet, six (6) USB 2.0 ports, four (4) serial ports
- Two (2) Year Warranty

KEY FEATURES

- Low power system
- Temperature controlled fans
- Integrated graphics
- HD Audio with surround header
- Large storage capability
- Fully RoHS compliant
- Customized BIOS settings
- Operating system loaded
- Highly customizable

The CorBrick855X™

Is a prepackaged configuration built around the small footprint, high performance-per-watt Gator Mini-ITX long-life industrial motherboard in a compact and rugged system. The CorBrick855X™ offers a modular platform for a broad array of thermal density and size constrained applications.

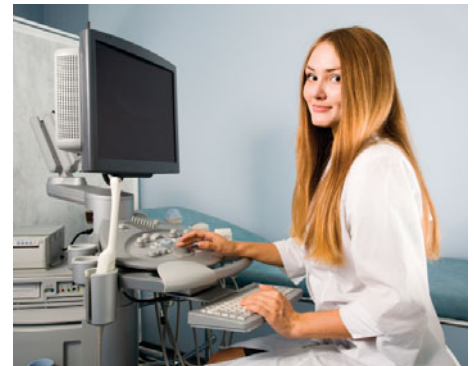
The Intel® 855GME chipset of the Gator Mini-ITX industrial motherboard provides virtually all of the resources needed to build a reliable and consistent computation platform for virtually any application.

A wealth of generic and legacy I/O (multi-serial, parallel, and USB ports) and high resolution using Intel Extreme Graphics 2 Technology provide the basis for a broad range of 3D/2D graphics interface with resolutions up to 1800x1440 @ 85Hz max CRT or 2048x1536 @ 60Hz max FP. Additional features like RAID and optional Dual Ethernet capabilities improve long-term reliability and provide maximum integration.

Where most custom systems are configured for a specific environment and limited space constraints, this system is specifically engineered for ease of use and ready-to-go deployment.

In addition to the standard features offered, the CorBrick855X can be customized with additional Ethernet, serial ports, memory, and storage options.

RoHS
COMPLIANT



Corvalent also offers BIOS customization, which can include splash screens and limiting which options can be modified in the field.

OUR COMMITMENT TO QUALITY

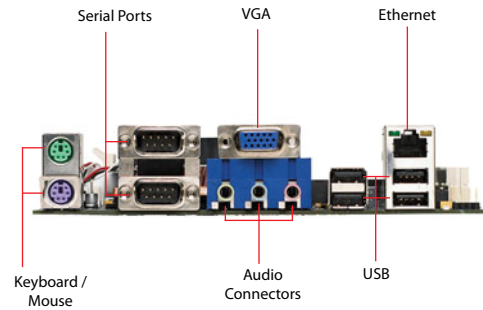
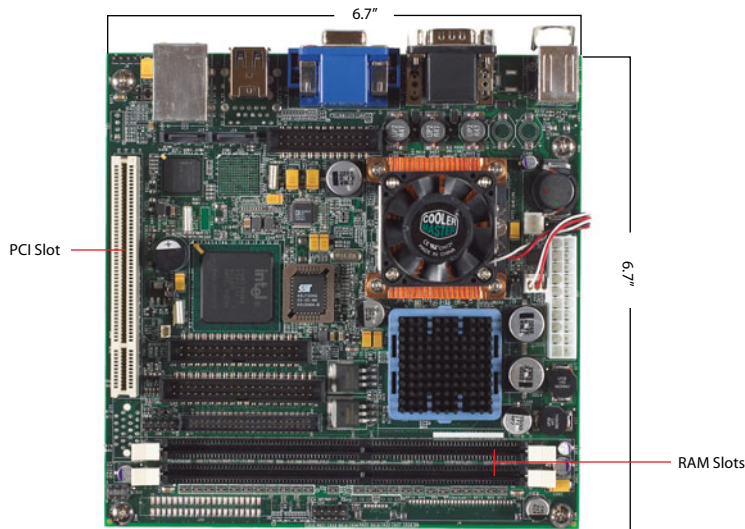
All Corvalent motherboards are designed and manufactured in an ISO 9001:2008 environment and are backed by a seven (7) to ten (10) year production life cycle guarantee.



CORVALENT
AT THE CORE OF EMBEDDED COMPUTING

CorBrick855X™

LOW PROFILE INTEGRATED EMBEDDED SYSTEM



TECHNICAL SPECIFICATIONS

Form Factor	273mm x 300mm x 65mm (DxWxH)
Cooling Units	Two (2) 5cm fans (side)
Air Flow	Front to rear
Standard Drives	One (1) Slim CD/DVD RW One (1) 2.5" HDD SATA 120 GB
Drive Bays	One (1) 2.5" HDD hidden One (1) 3.5" FDD open
Expansion Slots	Two (2) horizontal slots: One (1) 32-bit PCI slot One (1) Mini-PCI slot (PCI 2.2 33/32MHz connector Type III)
Motherboard	Corvalent – Gator Mini-ITX (GMEIX)
Chipset	Intel® 855GME + ICH4
Microprocessor	Intel Pentium® M processors: 1.8GHz, 1MB L2 cache (Socket 479)
Front Side Bus	400MHz
Memory	1GB DDR-333
System Bus	One (1) 32-bit PCI slot (Supports two (2) devices via optional riser card) One (1) Mini-PCI slot (PCI 2.2 33/32MHz connector Type III)
Onboard I/O	Two (2) Serial ATA connectors (150MB/s) with RAID 0/1 One (1) 40-pin PATA100 EIDE connector (supports two (2) devices) One (1) 44-pin PATA100 EIDE connector (supports two (2) devices) Six (6) USB 2.0 ports (Four (4) connectors, two (2) on headers)

RS232 serial port options available: two (2) or four (4) ports , One (1) factory configurable to RS422

Infrared support, Floppy controller
One (1) ECP/EPP parallel port
One (1) PS/2 mouse/keyboard connector
90W DC Open Frame Power W/80W AC Adaptor

Video Graphics Intel Extreme Graphics 2 Technology
Dual-channel LVDS controller

Ethernet Ethernet options include 10/100 and 10/100/1000 ports

Audio AC'97 compatible sound controller

BIOS AMI®

Battery Removable lithium battery for CMOS memory

Industrial Device Hardware monitor, onboard buzzer

Operating Temp 0°C to 45°C

Non-Operating -20°C to 65°C

Op. Humidity 10% to 85% @ 40°C RH non-condensing

Non-Operating 10% to 95% @ 40°C RH non-condensing

Part Number CorBrick855X

CORVALENT™
AT THE CORE OF EMBEDDED COMPUTING

1101 Arrow Point Drive, Building 5
Cedar Park, TX 78613, USA
toll free 888.776.7896 phone 512.456.2400
fax 512.456.2404 info@corvalent.com

www.corvalent.com